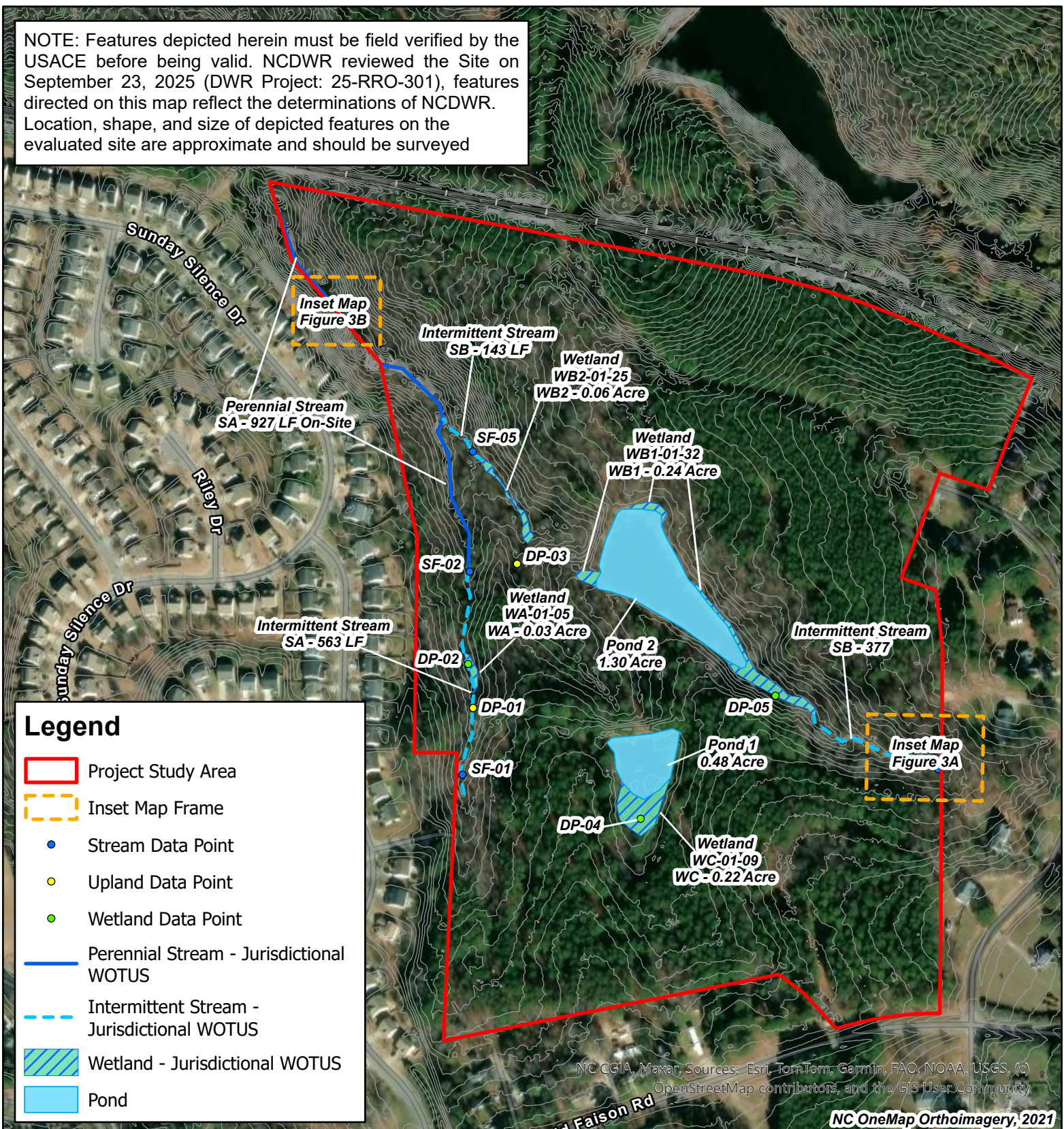
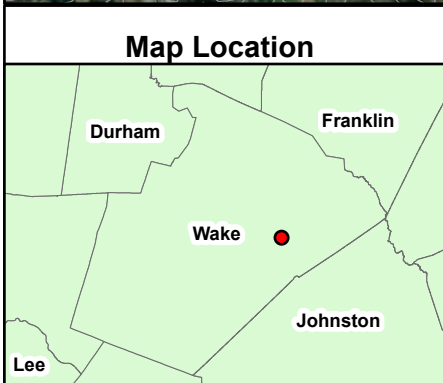


NOTE: Features depicted herein must be field verified by the USACE before being valid. NCDWR reviewed the Site on September 23, 2025 (DWR Project: 25-RRO-301), features directed on this map reflect the determinations of NCDWR. Location, shape, and size of depicted features on the evaluated site are approximate and should be surveyed



NC CGIA, Maxar, Sources: Esri, TomTom, Garmin, FAO, NOAA, USGS, (c) OpenStreetMap contributors, and the GIS User Community

NC OneMap Orthoimagery, 2021



### Wetland and Stream Sketch Map

4402 Old Faison Road Project  
Sage Project #2025.002

Prepared by: M. Ortiz

October 5, 2025

1:4,800

0 210 420 Feet

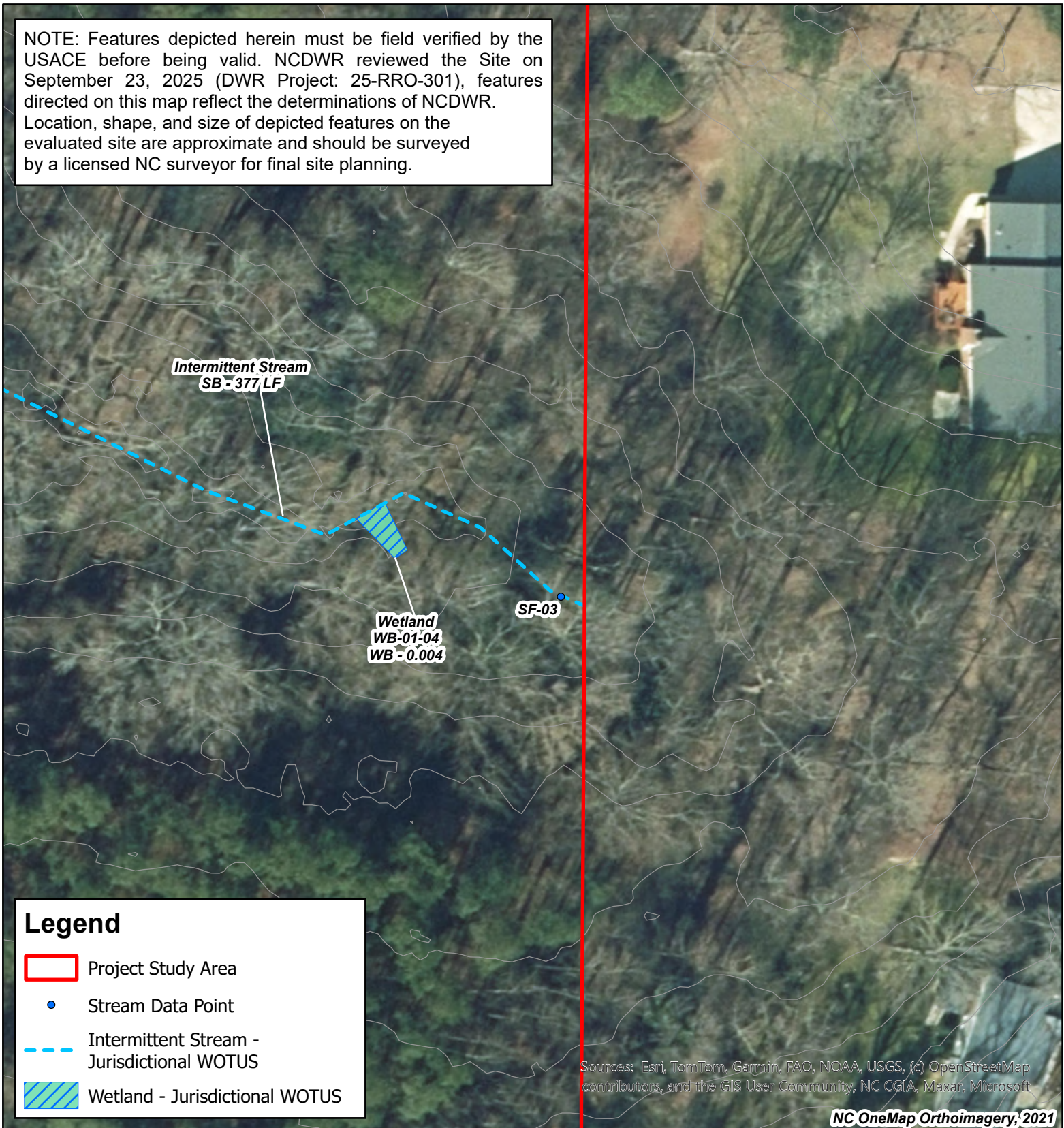


### Figure 3







Sage Ecological Services, Inc.

NOTE: Features depicted herein must be field verified by the USACE before being valid. NCDWR reviewed the Site on September 23, 2025 (DWR Project: 25-RRO-301), features directed on this map reflect the determinations of NCDWR. Location, shape, and size of depicted features on the evaluated site are approximate and should be surveyed by a licensed NC surveyor for final site planning.

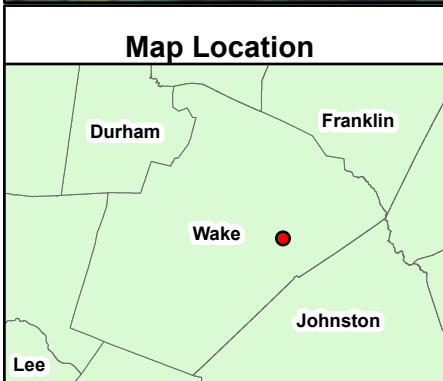


**Legend**

-  Project Study Area
-  Stream Data Point
-  Intermittent Stream - Jurisdictional WOTUS
-  Wetland - Jurisdictional WOTUS

Sources: Esri, TomTom, Garmin, FAO, NOAA, USGS, (c) OpenStreetMap contributors, and the GIS User Community, NC CGIA, Maxar, Microsoft

NC OneMap Orthoimagery, 2021

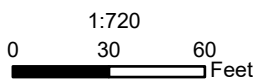


**Wetland and Stream Sketch Map**

4402 Old Faison Road Project  
Sage Project #2025.002

Prepared by: M. Ortiz

October 5, 2025



**Figure 3A**






Sage Ecological Services, Inc.

NOTE: Features depicted herein must be field verified by the USACE before being valid. NCDWR reviewed the Site on September 23, 2025 (DWR Project: 25-RRO-301), features directed on this map reflect the determinations of NCDWR. Location, shape, and size of depicted features on the evaluated site are approximate and should be surveyed

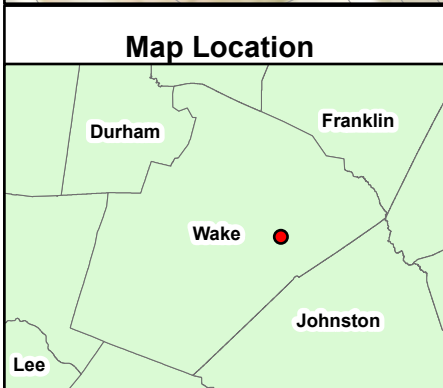


**Legend**

-  Project Study Area
-  Perennial Stream - Jurisdictional WOTUS
-  Wetland - Jurisdictional WOTUS

Sources: Esri, TomTom, Garmin, FAO, NOAA, USGS, (c) OpenStreetMap contributors, and the GIS User Community, NC CGIA, Maxar, Microsoft

NC OneMap Orthoimagery, 2021

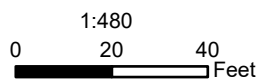


**Wetland and Stream Sketch Map**

4402 Old Faison Road Project  
Sage Project #2025.002

Prepared by: M. Ortiz

October 5, 2025



**Figure 3B**



Sage Ecological Services, Inc.